

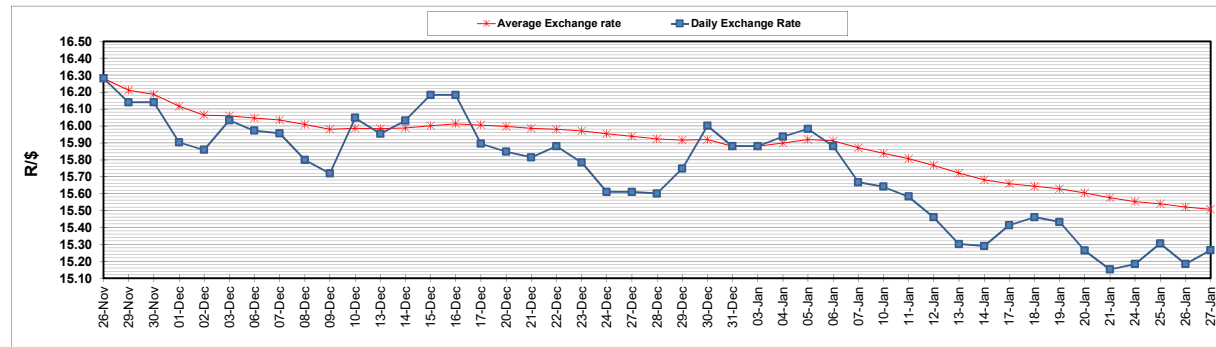
	PETROL 95 ULP	PETROL 93 ULP & LRP	DIESEL 0.05%	DIESEL 0.005%	ILL. PAR.
GAUTENG PUMP PRICE (SA c/l) AS FROM 05/01/2022	1,961.000	1,936.000	-	-	-
WHOLESALE PRICE (SA c/l) AS FROM 05/01/2022	-	-	1,724.680	1,728.080	1,096.688
SINGLE NATIONAL MAXIMUM RETAIL PRICE	-	-	-	-	1,394.000
BASIC FUEL PRICE - 27/01/2022 (SA c/l)	1,024.937	1,011.902	1,036.443	1,040.274	1,032.077
PRESS RELEASE CONTRIBUTION TO BFP 05/01/2022 - 27/01/2022 (SA c/l)	903.470	888.470	885.630	889.030	875.128
UNIT OVER/(UNDER) RECOVERY - 27/01/2022 (SA c/l)	(121.467)	(123.432)	(150.813)	(151.244)	(156.949)
AVERAGE BASIC FUEL PRICE 31/12/2021 - 27/01/2022	979.257	967.281	988.990	991.378	986.826
AVERAGE UNIT OVER/(UNDER) RECOVERY 31/12/2021 - 27/01/2022	(65.257)	(67.831)	(92.860)	(91.548)	(101.048)

ANALYSIS MOVEMENT OF AVERAGE OVER/(UNDER) RECOVERY

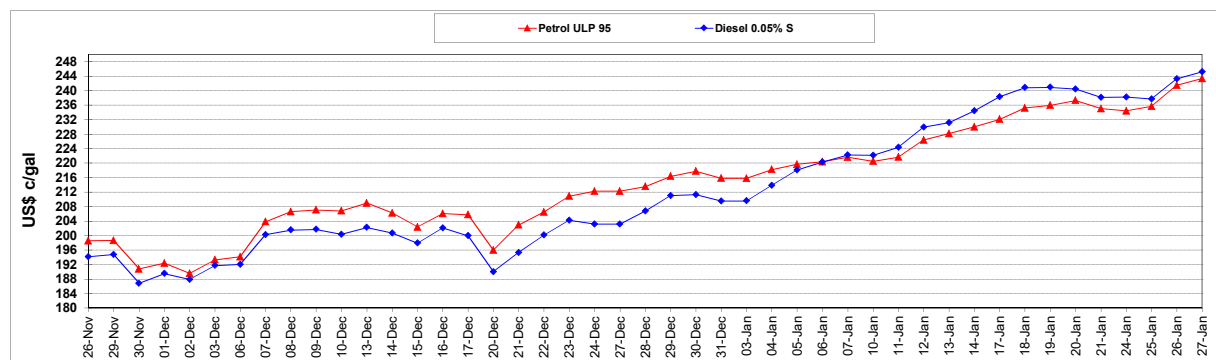
	PETROL 95	PETROL 93	DIESEL 0.05%	DIESEL 0.005%	ILL. PAR.
- MOVEMENT IN INTERNATIONAL PRODUCT PRICES	(91.241)	(93.497)	(119.102)	(117.854)	(127.233)
- MOVEMENT IN EXCHANGE RATE	25.984	25.666	26.242	26.306	26.185
AVERAGE UNIT OVER/(UNDER) RECOVERY 31/12/2021 - 27/01/2022	(65.257)	(67.831)	(92.860)	(91.548)	(101.048)

R/\$ EXCHANGE RATE - (R/\$15.2660 - 27/01/2022)

EXCHANGE RATE USED IN BASIC FUEL PRICE



INTERNATIONAL PRODUCT PRICES OF BASKET USED IN BASIC FUEL PRICE



BASIC FUEL PRICE IN SA CENTS PER LITRE

